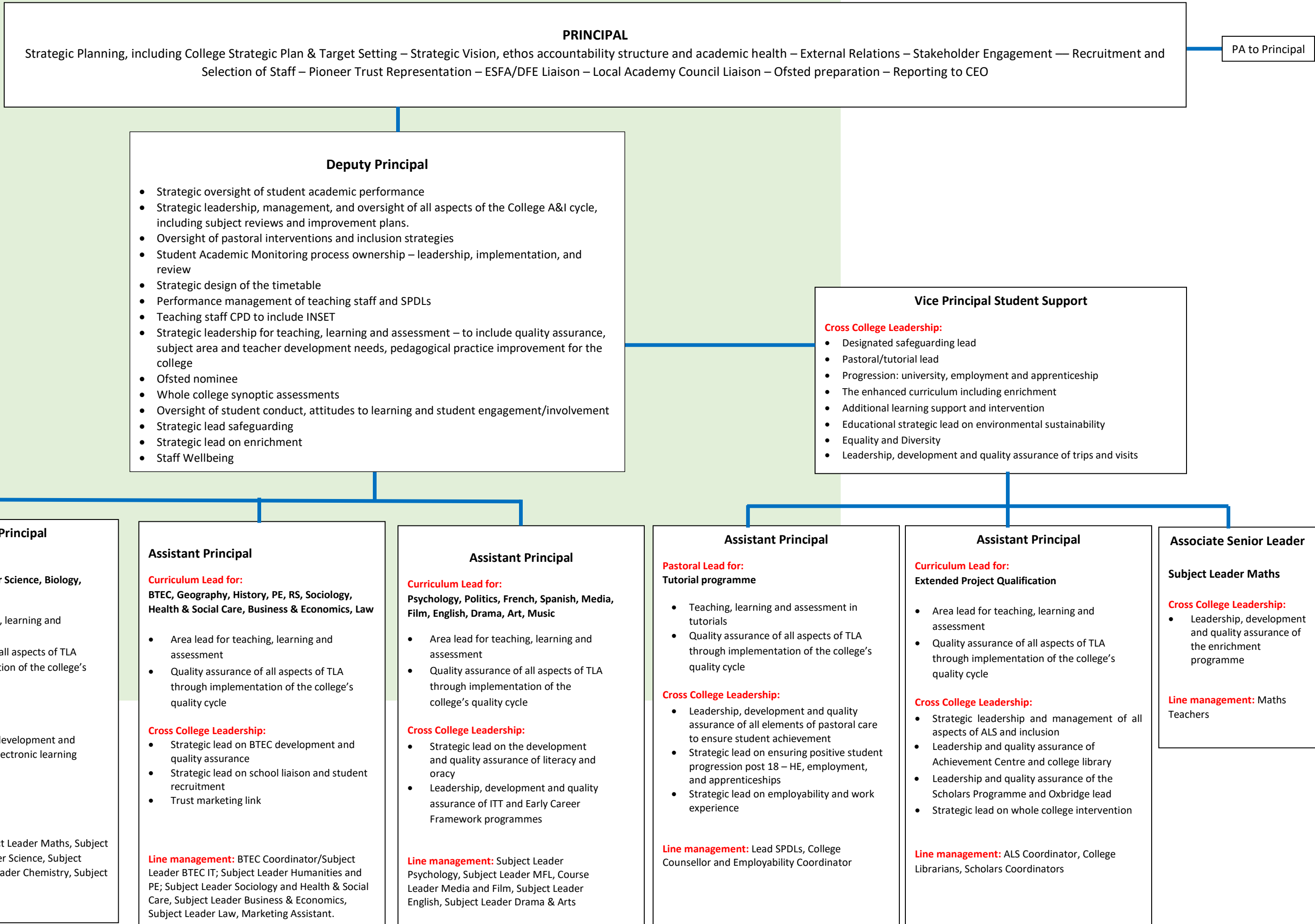


Rochdale Sixth Form College SLT Structure



PRINCIPAL

Strategic Planning, including College Strategic Plan & Target Setting – Strategic Vision, ethos accountability structure and academic health – External Relations – Stakeholder Engagement — Recruitment and Selection of Staff – Pioneer Trust Representation – ESFA/DFE Liaison – Local Academy Council Liaison – Ofsted preparation – Reporting to CEO

PA to Principal

Deputy Principal

- Strategic oversight of student academic performance
- Strategic leadership, management, and oversight of all aspects of the College A&I cycle, including subject reviews and improvement plans.
- Oversight of pastoral interventions and inclusion strategies
- Student Academic Monitoring process ownership – leadership, implementation, and review
- Strategic design of the timetable
- Performance management of teaching staff and SPDLs
- Teaching staff CPD to include INSET
- Strategic leadership for teaching, learning and assessment – to include quality assurance, subject area and teacher development needs, pedagogical practice improvement for the college
- Ofsted nominee
- Whole college synoptic assessments
- Oversight of student conduct, attitudes to learning and student engagement/involvement
- Strategic lead safeguarding
- Strategic lead on enrichment
- Staff Wellbeing

Vice Principal Student Support

- Cross College Leadership:**
- Designated safeguarding lead
 - Pastoral/tutorial lead
 - Progression: university, employment and apprenticeship
 - The enhanced curriculum including enrichment
 - Additional learning support and intervention
 - Educational strategic lead on environmental sustainability
 - Equality and Diversity
 - Leadership, development and quality assurance of trips and visits

Assistant Principal

Curriculum Lead for:
Maths, Physics, Computer Science, Biology, Chemistry, BTEC Science

- Area lead for teaching, learning and assessment
- Quality assurance of all aspects of TLA through implementation of the college's quality cycle

- Cross College Leadership:**
- Cover co-ordination
 - Strategic lead on the development and quality assurance of electronic learning

Line Management: Subject Leader Maths, Subject Leader Physics & Computer Science, Subject Leader Biology, Subject Leader Chemistry, Subject Leader BTEC Science.

Assistant Principal

Curriculum Lead for:
BTEC, Geography, History, PE, RS, Sociology, Health & Social Care, Business & Economics, Law

- Area lead for teaching, learning and assessment
- Quality assurance of all aspects of TLA through implementation of the college's quality cycle

- Cross College Leadership:**
- Strategic lead on BTEC development and quality assurance
 - Strategic lead on school liaison and student recruitment
 - Trust marketing link

Line management: BTEC Coordinator/Subject Leader BTEC IT; Subject Leader Humanities and PE; Subject Leader Sociology and Health & Social Care, Subject Leader Business & Economics, Subject Leader Law, Marketing Assistant.

Assistant Principal

Curriculum Lead for:
Psychology, Politics, French, Spanish, Media, Film, English, Drama, Art, Music

- Area lead for teaching, learning and assessment
- Quality assurance of all aspects of TLA through implementation of the college's quality cycle

- Cross College Leadership:**
- Strategic lead on the development and quality assurance of literacy and oracy
 - Leadership, development and quality assurance of ITT and Early Career Framework programmes

Line management: Subject Leader Psychology, Subject Leader MFL, Course Leader Media and Film, Subject Leader English, Subject Leader Drama & Arts

Assistant Principal

Pastoral Lead for:
Tutorial programme

- Teaching, learning and assessment in tutorials
- Quality assurance of all aspects of TLA through implementation of the college's quality cycle

- Cross College Leadership:**
- Leadership, development and quality assurance of all elements of pastoral care to ensure student achievement
 - Strategic lead on ensuring positive student progression post 18 – HE, employment, and apprenticeships
 - Strategic lead on employability and work experience

Line management: Lead SPDLs, College Counsellor and Employability Coordinator

Assistant Principal

Curriculum Lead for:
Extended Project Qualification

- Area lead for teaching, learning and assessment
- Quality assurance of all aspects of TLA through implementation of the college's quality cycle

- Cross College Leadership:**
- Strategic leadership and management of all aspects of ALS and inclusion
 - Leadership and quality assurance of Achievement Centre and college library
 - Leadership and quality assurance of the Scholars Programme and Oxbridge lead
 - Strategic lead on whole college intervention

Line management: ALS Coordinator, College Librarians, Scholars Coordinators

Associate Senior Leader

Subject Leader Maths

- Cross College Leadership:**
- Leadership, development and quality assurance of the enrichment programme

Line management: Maths Teachers